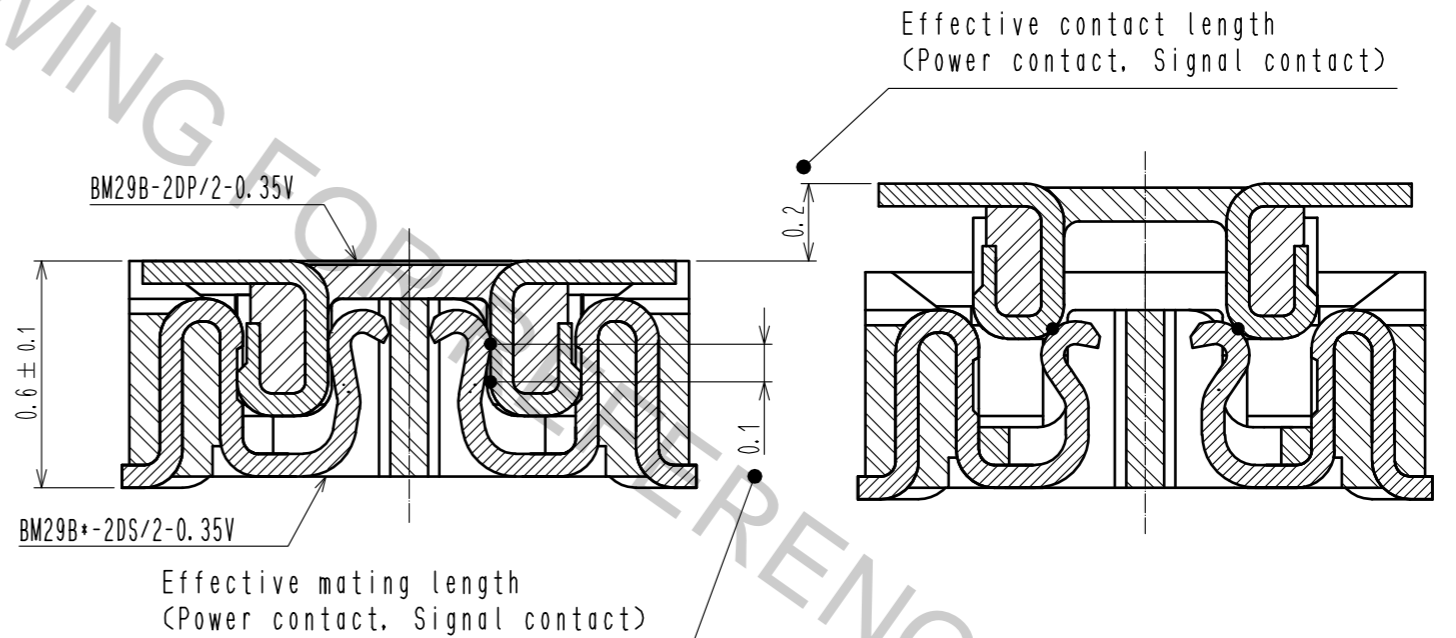
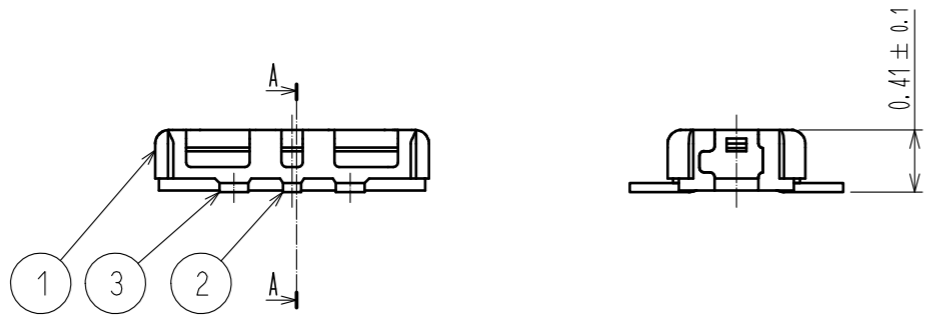
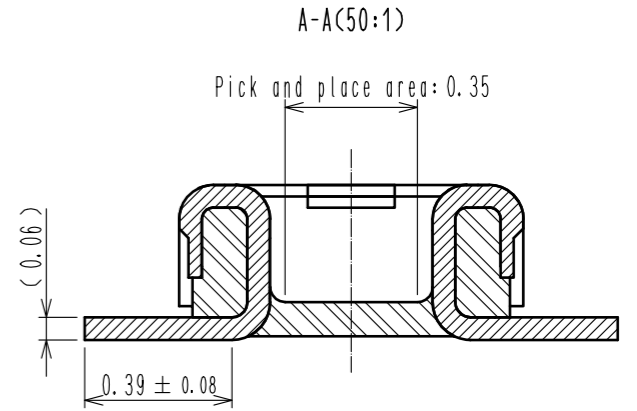
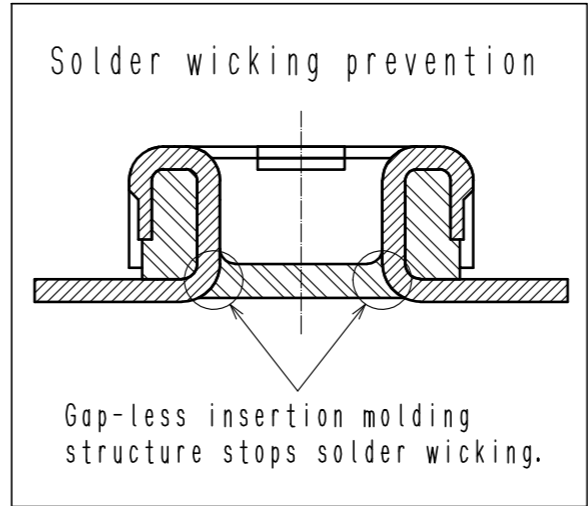
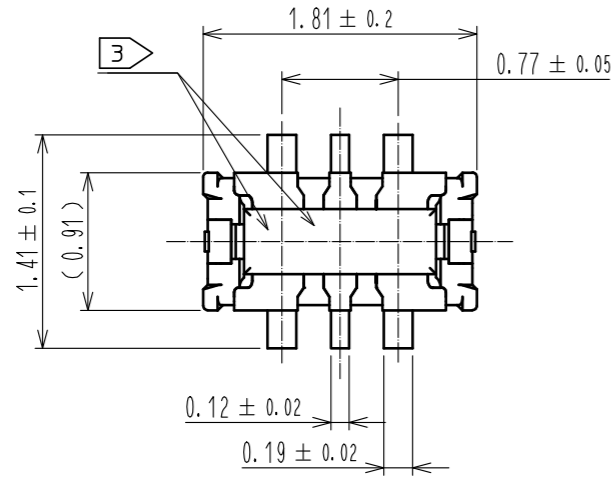


Apr.1.2017 Copyright 2017 HIROSE ELECTRIC CO., LTD. All Rights Reserved.

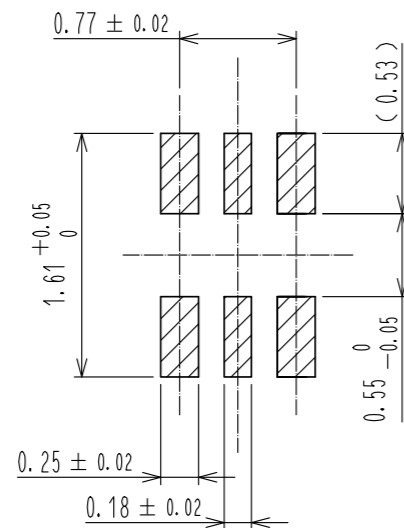


- NOTE 1 . All lead co-planarity shall be 0.08mm MAX.
- 2 . Contact plating specifications
 Contact area : Gold 0.05 μm MIN
 SMT lead : Gold 0.05 μm MIN
 Under plating : Nickel 1 μm MIN
 (Surface : Sealing)
- 3 . HRS mark and CAV No. are indicated in approx. position shown.

3	PHOSPHOR BRONZE	2	7	PS	CLEAR. REINFORCEMENT COLLAR
2	PHOSPHOR BRONZE	2	6	PS	BLACK. PLASTIC REEL
1	LCP	UL94 V-0. BLACK	5	POLYESTER	CLEAR. COVER TAPE
			4	PS	SMOKE GRAY. EMBOSSED CARRIER TAPE
NO.	MATERIAL	FINISH . REMARKS	NO.	MATERIAL	FINISH . REMARKS

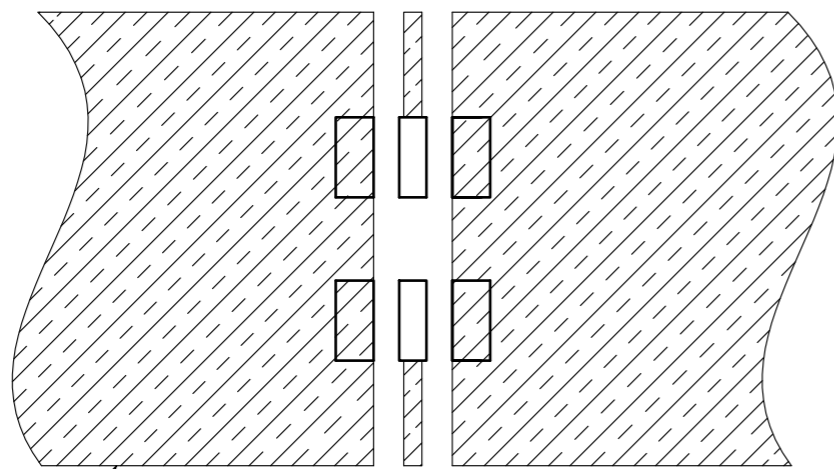
UNITS mm		SCALE 20:1	COUNT 	DESCRIPTION OF REVISIONS	DESIGNED	CHECKED	DATE
HRS HIROSE ELECTRIC CO., LTD.		APPROVED : MO. ISHIDA	16.01.06	DRAWING NO.	EDC-362710-53-01		
		CHECKED : WR. FUKUCHI	16.01.06	PART NO.	BM29B-2DP/2-0.35V(53)		
		DESIGNED : TY. YAMASAKI	16.01.06	CODE NO.	CL673-7002-0-53		
		DRAWN : KR. AJITO	16.01.06		1/3		

◆ Recommended PCB layout

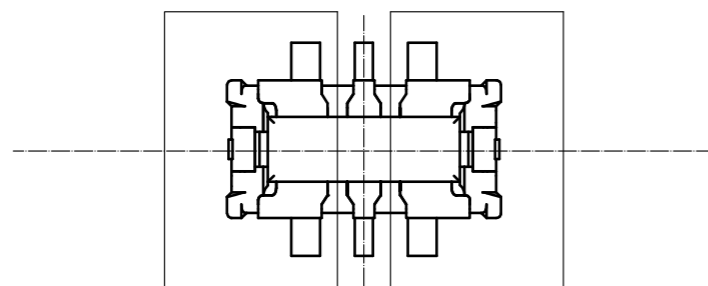


◆ Recommended metal mask dimensions
 Metal mask thickness : 100 μm
 (Open ratio : 100% for PCB layout)

◆ Recommended electrical circuit layout

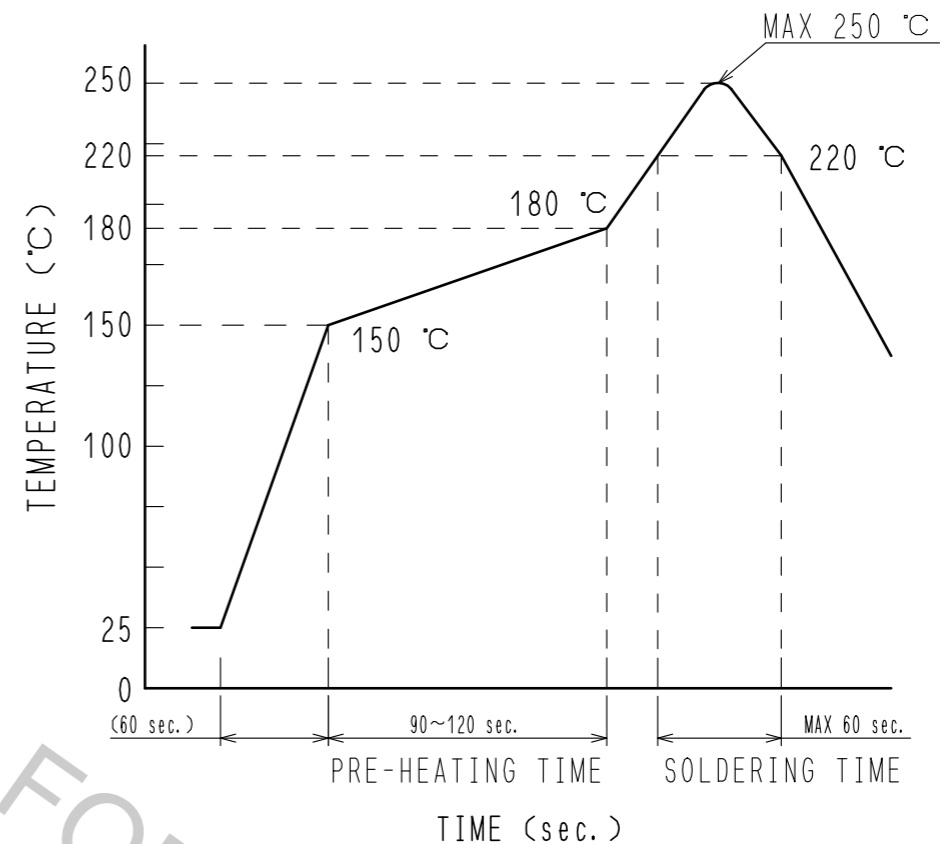


Electrical circuit



Power pin unit

4 Recommended reflow temperature profile using lead-free solder paste.



Reflow method: IR reflow
 Number of reflow cycles: 2 cycles MAX.
 1) Reflow time
 Duration above 220°C: 60 sec MAX.
 (Peak temperature: 250°C MAX)
 2) Pre-heat time
 Pre-heat temperature (MIN): 150°C
 Pre-heat temperature (MAX): 180°C
 Pre-heat time: 90-120 sec.

- 4 The temperatures mentioned above refer to the PCB surface temperature near the connector leads. The temperature profiles are based on the above conditions. In individual applications the actual temperature may vary, depending on solder paste type, volume/thickness and board size/thickness. Consult your solder paste and equipment manufacturer for specific recommendations.
- 5 Please contact us in case you will make different settings from our recommendation.

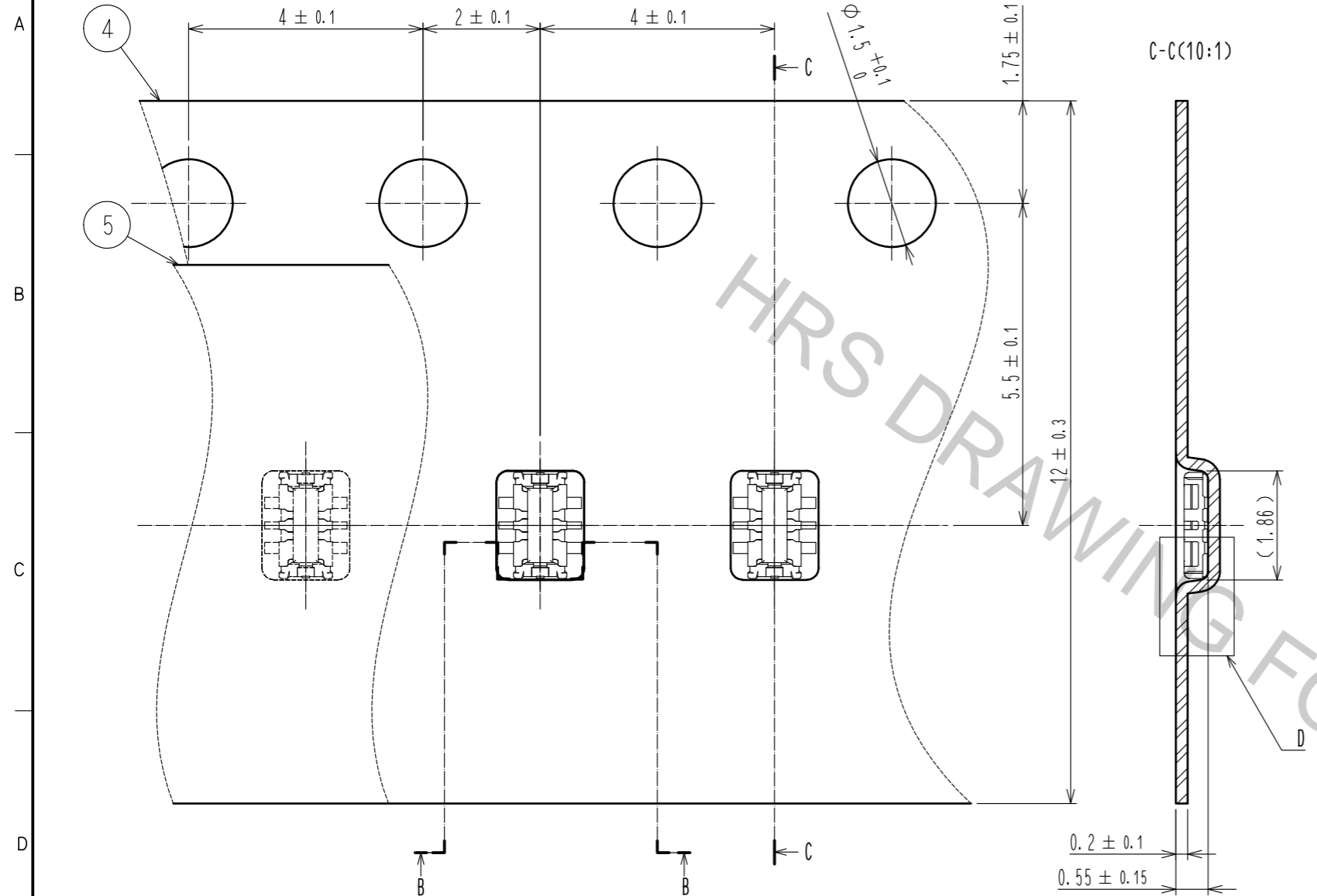
HRS	DRAWING NO.	EDC-362710-53-01
	PART NO.	BM29B-2DP/2-0.35V(53)
	CODE NO.	CL673-7002-0-53
		2/3

A
B
C
D
E
F

Apr.1.2017 Copyright 2017 HIROSE ELECTRIC CO., LTD. All Rights Reserved.

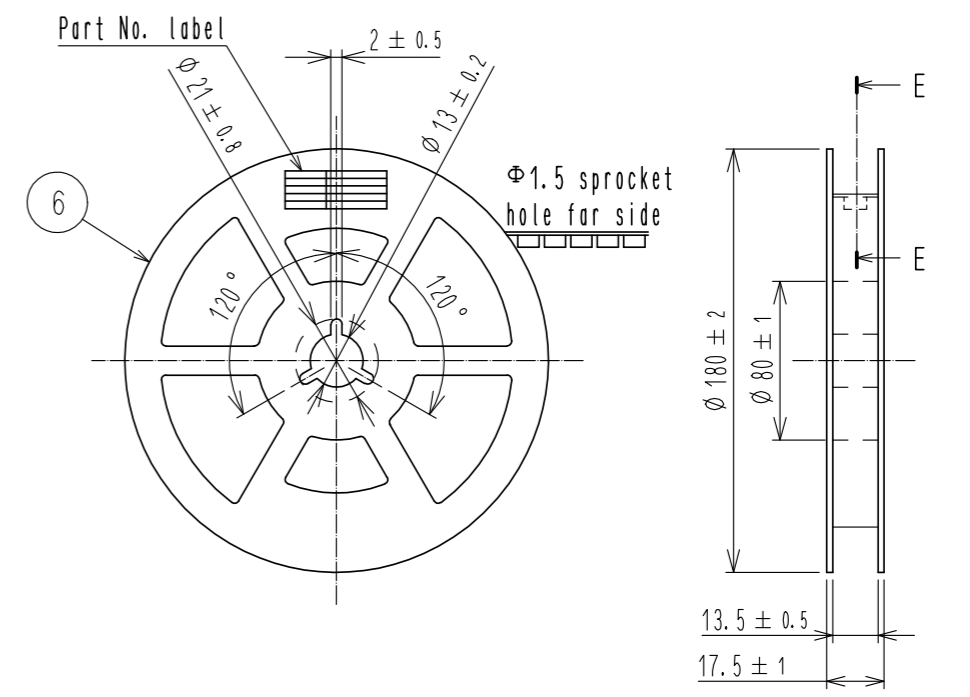
HRS DRAWING FOR REFERENCE

Embossed carrier tape packaging (10:1)

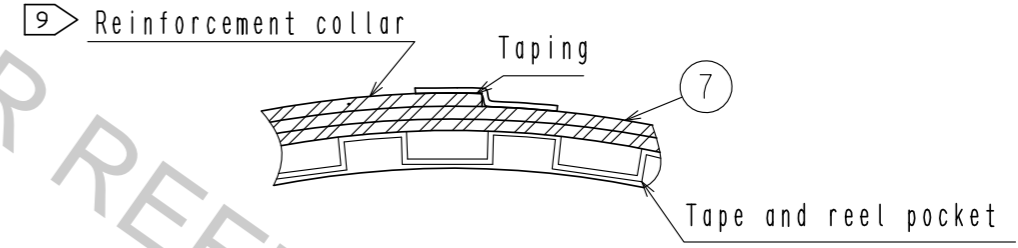


HRS DRAWING FOR REFERENCE

Style and dimension of reel (Free)



E-E (Free)



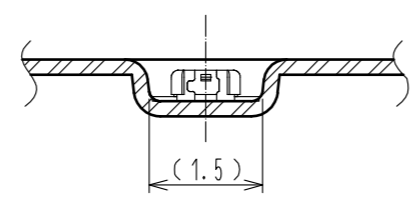
Detail of part No. label

製造年月日	** ** *
製品コード	CL0673-7002-0-53
製品名	BM29B-2DP/2-0.35V(53)
数量	1,000
納入者	ヒロセ電機(株)

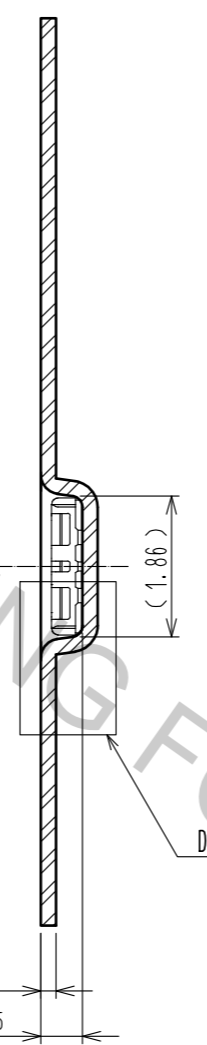
Data of manufactured
 Code No.
 Part No.
 Quantity
 Supplier

- 6 . Per reel 1,000 connectors.
- 7 . The dimensions in parentheses are for reference.
- 8 . Refer to JIS C 0806 and IEC60286-3
(Packaging of components for automatic handling)
- 9 . Wrap a reinforcing collar made by polystyrene to the surface of emboss reel at the termination side in order to protect emboss carrier tape, top cover tape.

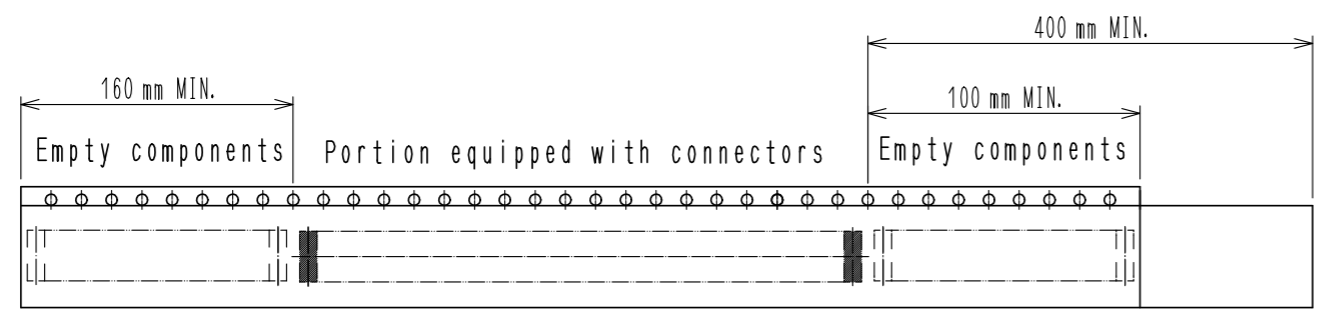
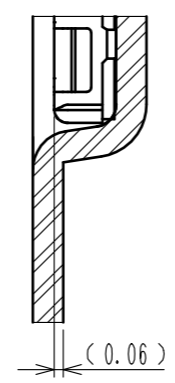
B-B (10:1)



C-C (10:1)



D (20:1)



8 Taping (Free)

HRS	DRAWING NO.	EDC-362710-53-01
	PART NO.	BM29B-2DP/2-0.35V(53)
	CODE NO.	CL673-7002-0-53
		3/3