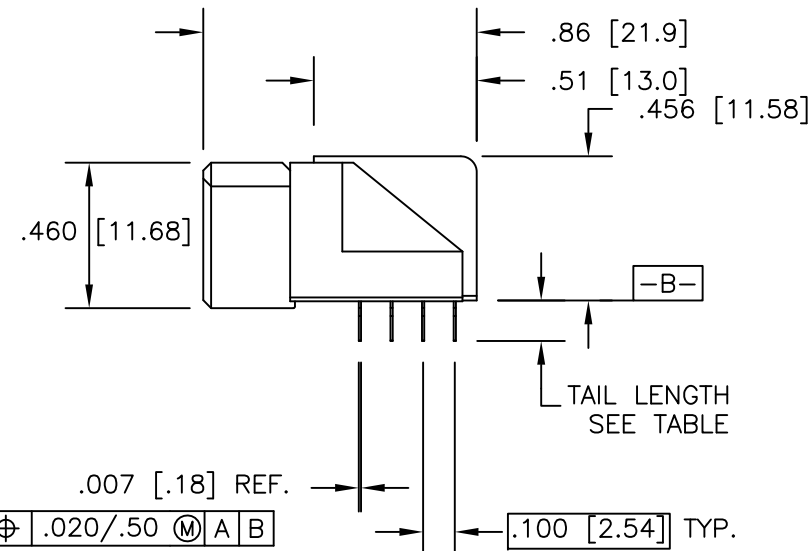
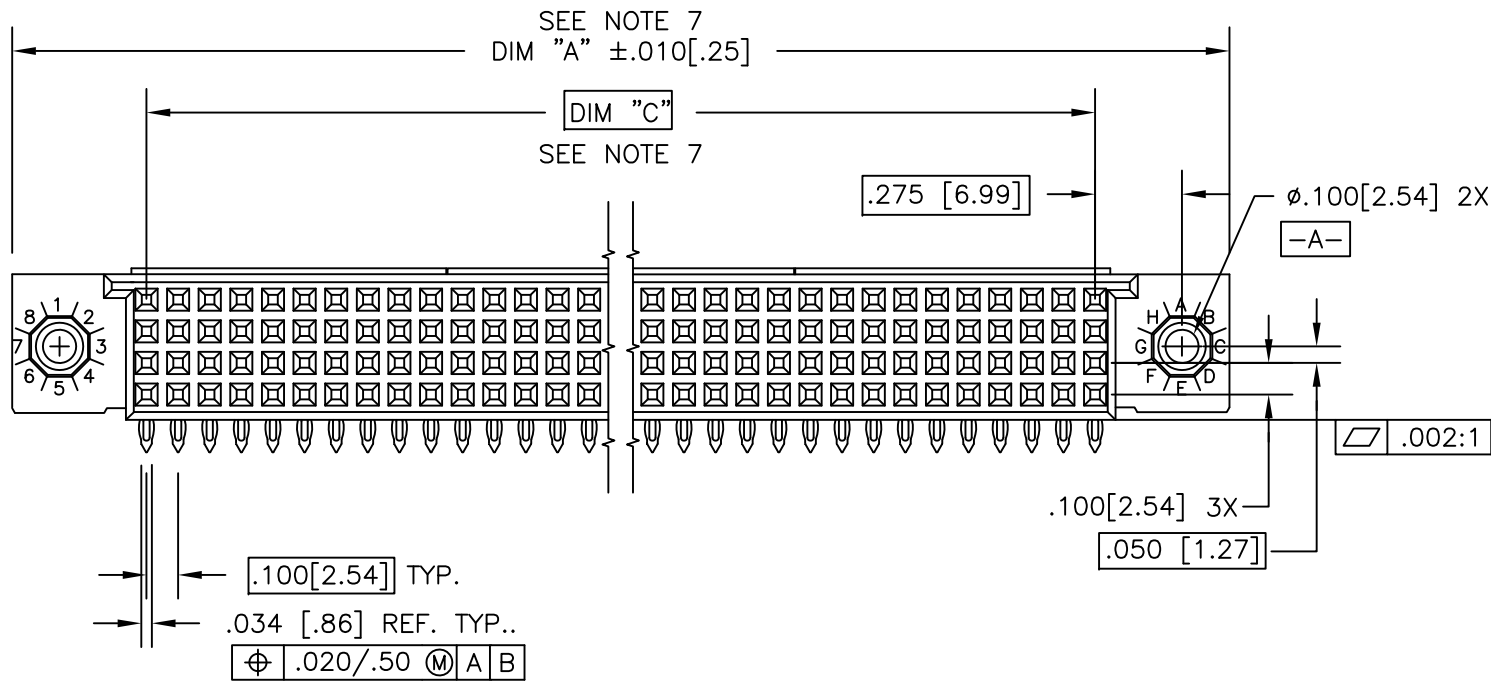
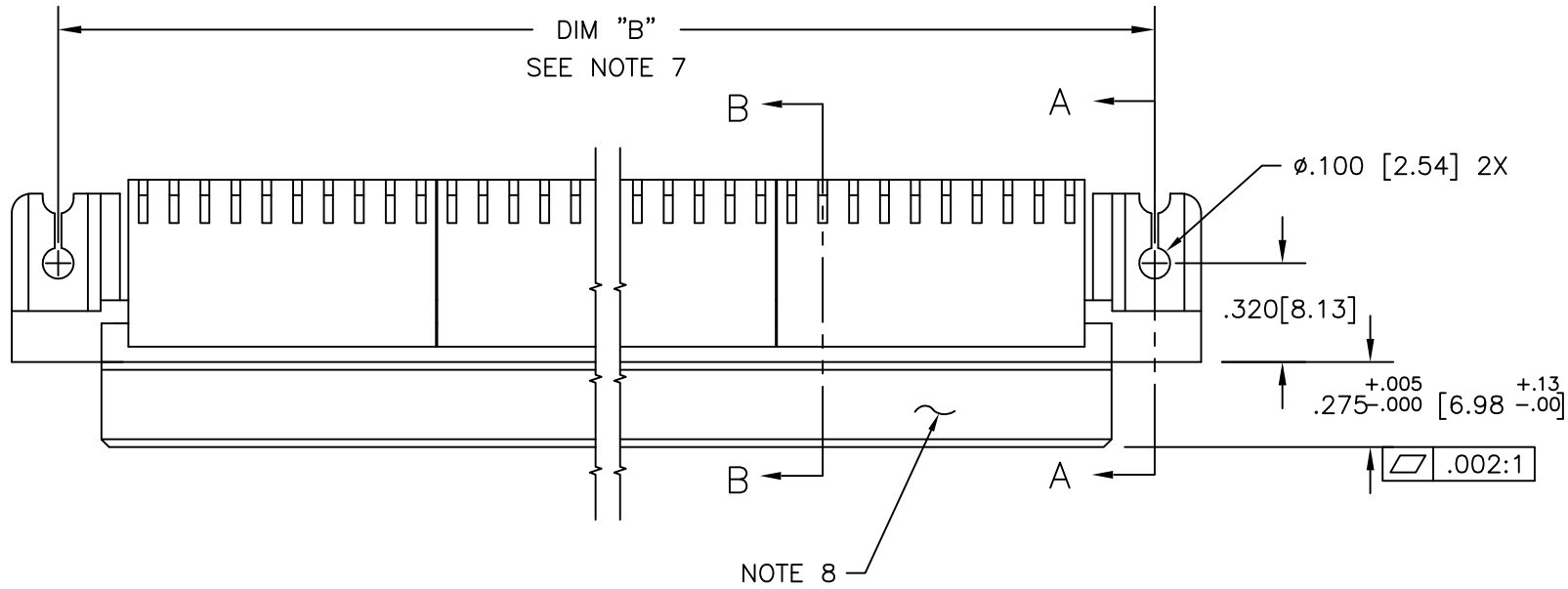


PRODUCT NUMBER
SEE TABLE

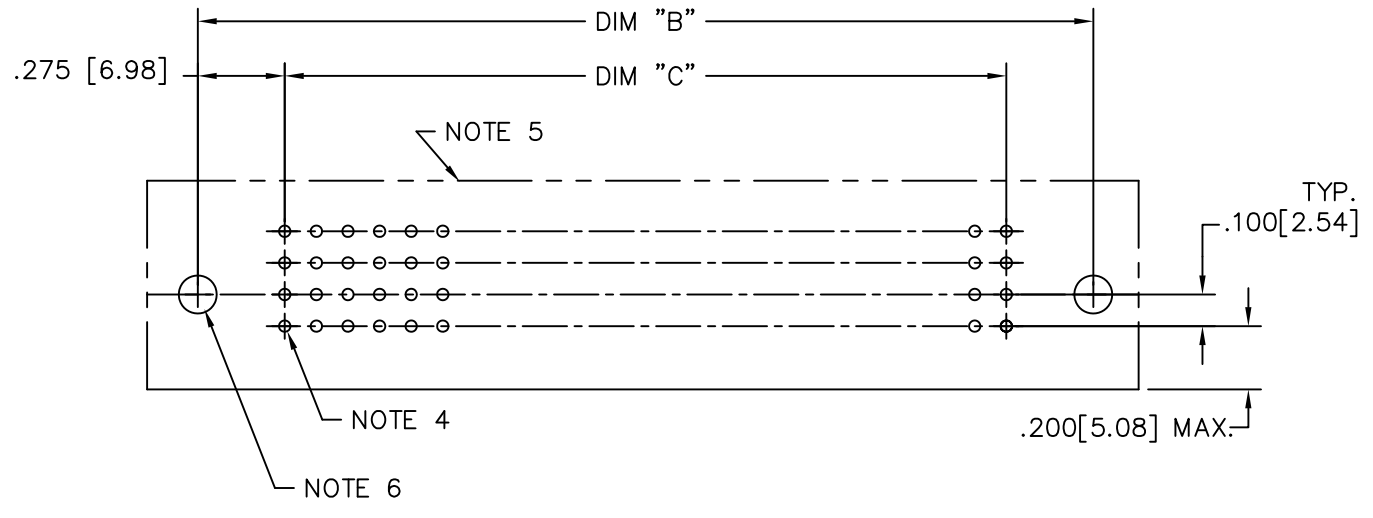
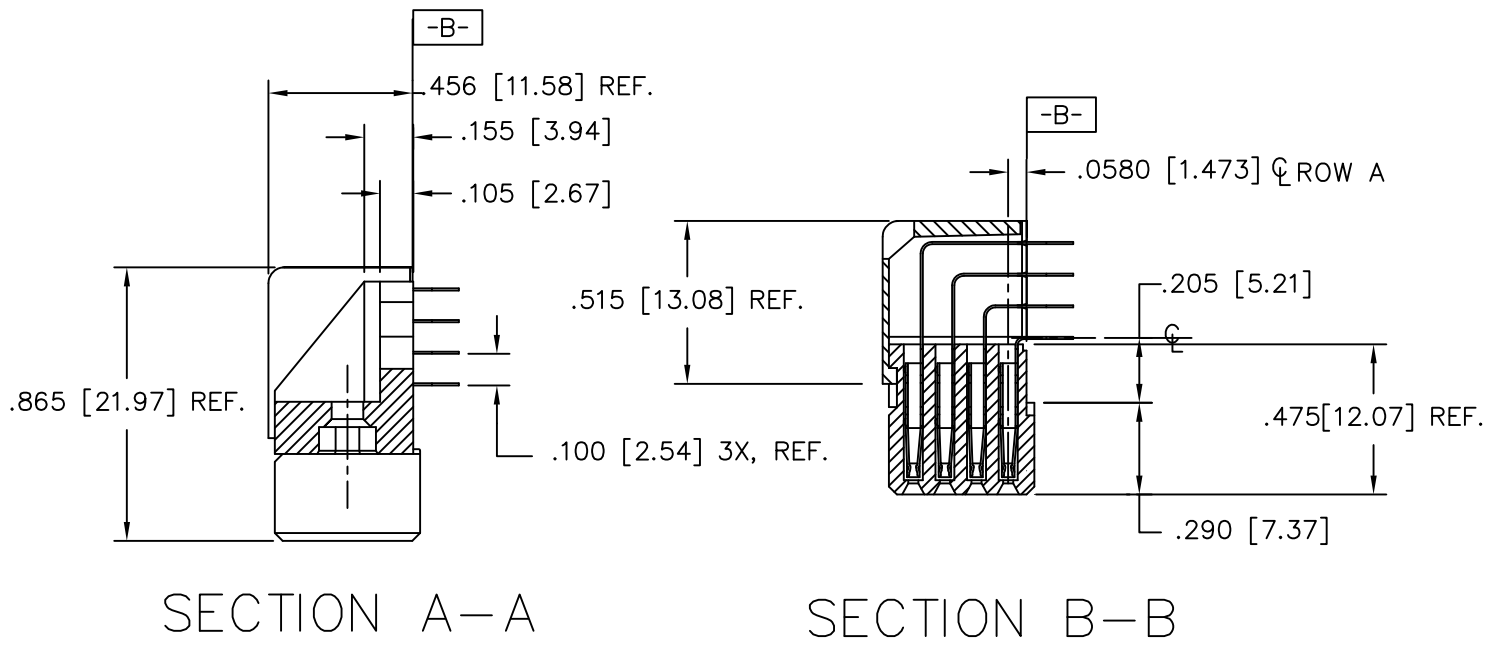


Amphenol
FCi

Copyright AFci

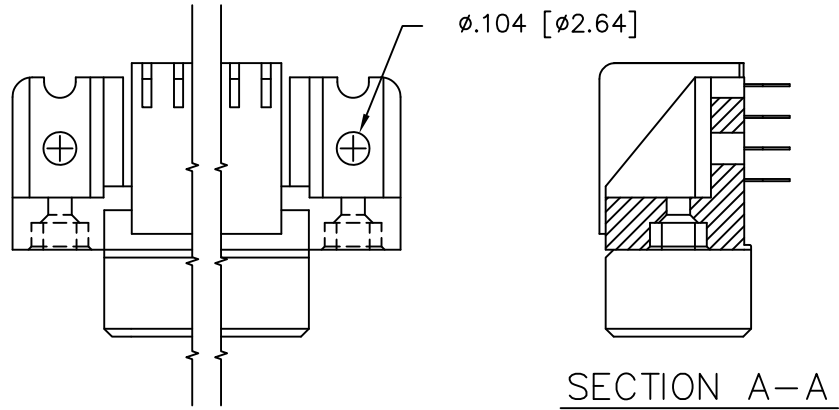
mat'l. code NOTE 3		surface ISO 1302 ✓		tolerance ISO 406 ISO 1101		projection INCH/MM		product family HPC	
ltr	ecn no	dr	date	tolerances unless otherwise specified		scale 1:1		title 4 ROW R/A RECEPTACLE PRESS FIT	
X	ELX-I-26916	MJA	05/04/17	angles	linear			dwg no 50642	
-	-	-	-					sheet 1 of 7 size A3	
S	V05-1003	DAI	11/1/05	0°±2°				type Product Customer Drawing	
T	V05-1041	HTB	11/14/05	dr	D.INGRAM	7/13/05	Amphenol FCi		
U	M06-0255	MHT	7/06/06	enr	D.HORCHLER	7/13/05			
V	M06-0388	MHT	10/04/06	chr	M JACOB	05/04/17			
W	M08-0149	MHT	5/27/08	appd	BIJU K PAUL	05/04/17			
sheet	revision	X	X	W	W	W	W		
index	sheet	1	2	3	4	5	6	7	

PRODUCT NUMBER
SEE TABLE

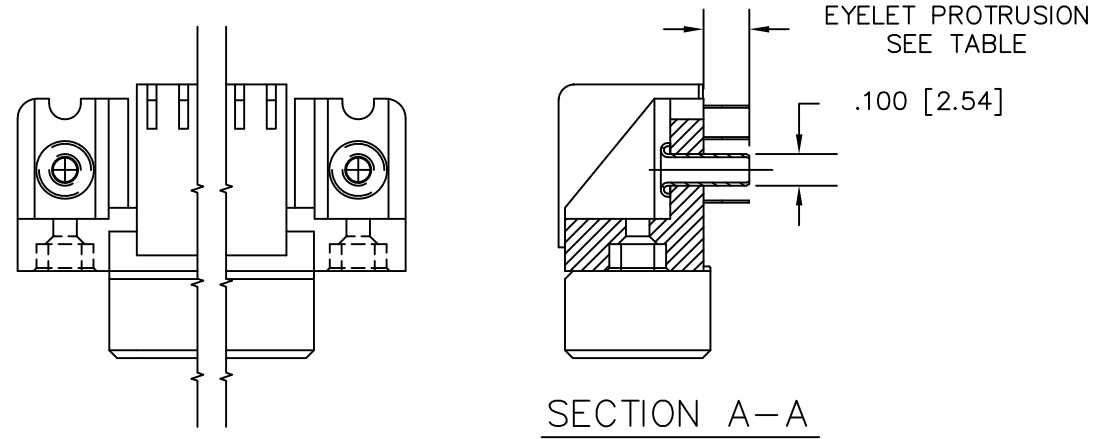


mat'l. code NOTE 3		surface ISO 1302 ✓	tolerance ISO 406 ISO 1101	projection 	product family HPC
ltr	ecn no	dr	date	tolerances unless otherwise specified	title 4 ROW R/A RECEPTACLE PRESS FIT
x				linear .XX±.01/.X±0.3 .XXX±.005/.XX±0.13 .XXXX±.0020/.XXX±0.051	
				angles 0°±2°	
		dr	D.INGRAM	7/13/05	scale 1:1
		enr	D.HORCHLER	7/13/05	Amphenol FCi
		chr	M JACOB	05/04/17	
		appd	BIJU K PAUL	05/04/17	
sheet index	revision sheet				dwg no 50642
					sheet 2 of 7
					size A3
					type Product Customer Drawing

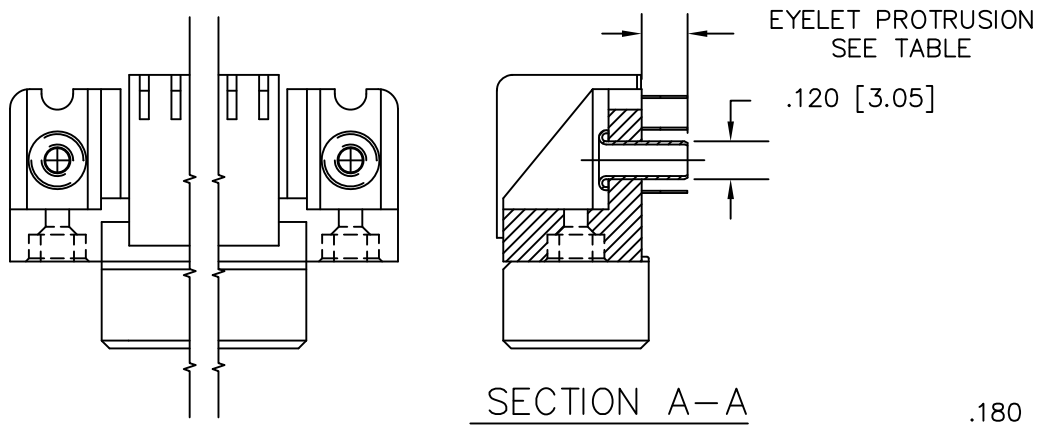
PRODUCT NUMBER
SEE TABLE



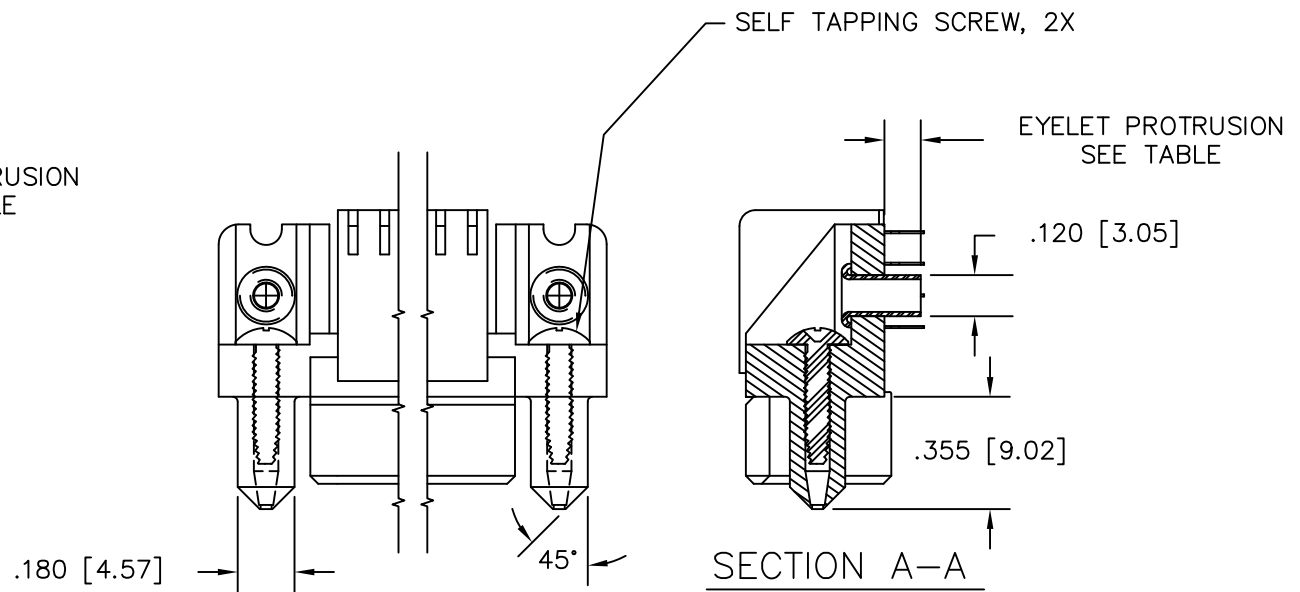
SPECIAL FEATURE OPTION A
SEE NOTE 6



SPECIAL FEATURE OPTION B
SEE NOTE 6



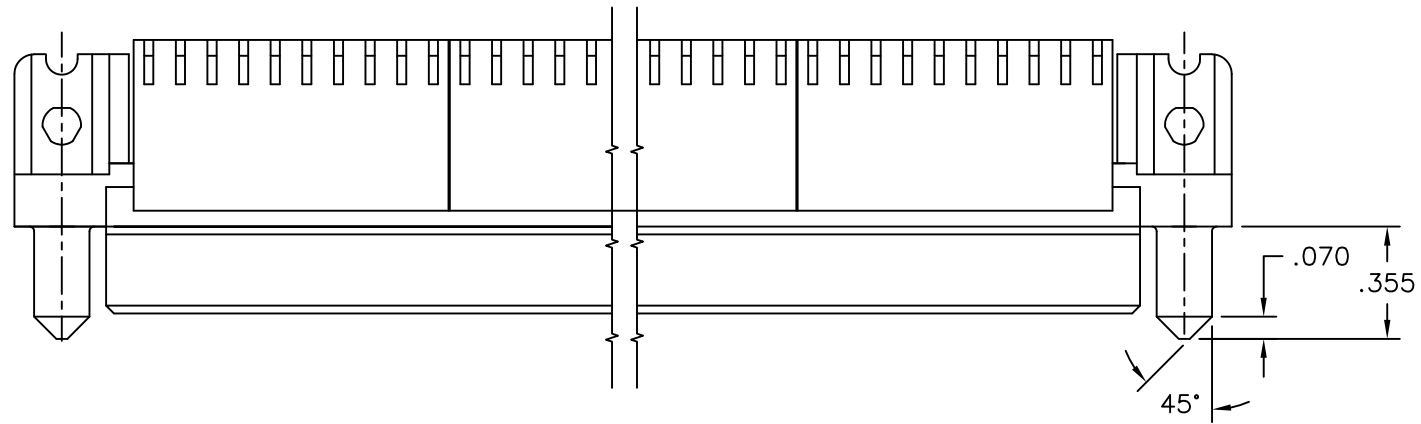
SPECIAL FEATURE OPTION C
SEE NOTE 6



SPECIAL FEATURE OPTION D
SEE NOTE 6

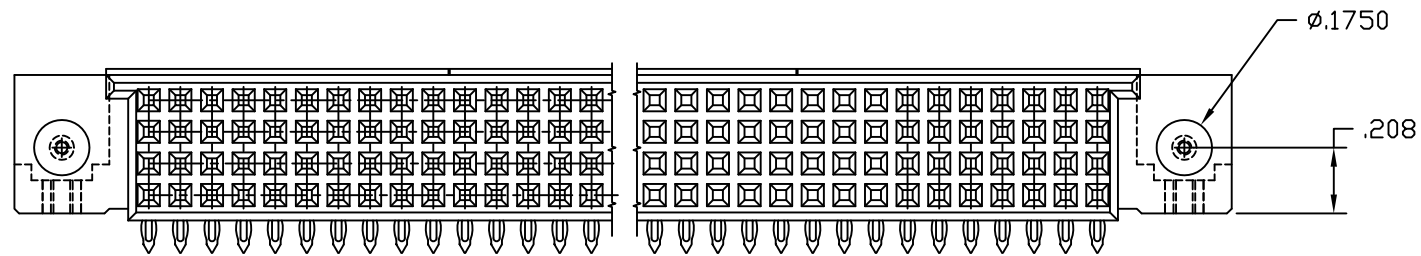
mat'l. code NOTE 3		surface ISO 1302 ✓	tolerance ISO 406 ISO 1101	projection INCH/MM	product family HPC
ltr	ecn no	dr	date	tolerances unless otherwise specified	title 4 ROW R/A RECEPTACLE PRESS FIT
W				angles linear XX±.01/XX±0.3 XXX±.005/XX±0.13 O'±2' XXXX±.0020/XXX±0.051	
				dr D.INGRAM 7/13/05	dwg no sheet 3 of 7 size
				enr D.HORCHLER 7/13/05	50642 A3
				chr T.BREWBAKER 7/13/05	type Product Customer Drawing
				appd D.HORCHLER 7/13/05	
sheet index	revision sheet				

PRODUCT NUMBER
SEE TABLE



SPECIAL FEATURE OPTION E

SEE NOTE 6



mat'l. code		surface		tolerance		projection		product family		
NOTE 3		ISO 1302 ✓		ISO 406 ISO 1101				HPC		
ltr	ecn no	dr	date	tolerances unless otherwise specified		INCH/MM		title		
W				angles	linear			4 ROW R/A RECEPTACLE PRESS FIT		
				0°±2°	.XX±.01/.X±0.3 .XXX±.005/.XX±0.13 .XXXX±.0020/.XXX±0.051	scale 1:1		dwg no		
				dr	D.INGRAM	7/13/05			sheet 4 of 7	
				enr	D.HORCHLER	7/13/05			50642	A3
				chr	T.BREWBAKER	7/13/05				
				appd	D.HORCHLER	7/13/05				
sheet index	revision sheet							type Product Customer Drawing		

PRODUCT NUMBER	NUMBER OF POSITIONS NOTE 2	TAIL LENGTH	SPECIAL FEATURES SEE NOTE 6	SOLDER TAIL PLATING	CONTACT PLATING	EYELET PROTRUSION	GUIDE PINS
50642-1YYYE	YYY	.125±.010/3.18±.25	-	TIN LEAD	30u"/.76u Au	N/A	NONE
50642-1YYYELF	YYY	.125±.010/3.18±.25	-	TIN	30u"/.76u GXT	N/A	NONE
50642-1YYYEAE	YYY	.125±.010/3.18±.25	"A"	TIN LEAD	30u"/.76u Au	N/A	NONE
50642-1YYYEALF	YYY	.125±.010/3.18±.25	"A"	TIN	30u"/.76u GXT	N/A	NONE
50642-1YYYEAB	YYY	.125±.010/3.18±.25	"B"	TIN LEAD	30u"/.76u Au	.145/3.68	NONE
50642-1YYYEABLF	YYY	.125±.010/3.18±.25	"B"	TIN	30u"/.76u GXT	.145/3.68	NONE
50642-1YYYEAC	YYY	.125±.010/3.18±.25	"C"	TIN LEAD	30u"/.76u Au	.115/2.92	NONE
50642-1YYYEACLF	YYY	.125±.010/3.18±.25	"C"	TIN	30u"/.76u GXT	.115/2.92	NONE
50642-1YYYED	YYY	.125±.010/3.18±.25	"D"	TIN LEAD	30u"/.76u Au	.115/2.92	2
50642-1YYYEDLF	YYY	.125±.010/3.18±.25	"D"	TIN	30u"/.76u GXT	.115/2.92	2
50642-1YYYEE	YYY	.125±.010/3.18±.25	"E"	TIN LEAD	30u"/.76u Au	N/A	2
50642-1YYYEEELF	YYY	.125±.010/3.18±.25	"E"	TIN	30u"/.76u GXT	N/A	2
50642-1YYYF	YYY	.145±.010/3.68±.25	-	TIN LEAD	30u"/.76u Au	N/A	NONE
50642-1YYYFLF	YYY	.145±.010/3.68±.25	-	TIN	30u"/.76u GXT	N/A	NONE
50642-1YYYFA	YYY	.145±.010/3.68±.25	"A"	TIN LEAD	30u"/.76u Au	N/A	NONE
50642-1YYYFALF	YYY	.145±.010/3.68±.25	"A"	TIN	30u"/.76u GXT	N/A	NONE
50642-1YYYFC	YYY	.145±.010/3.68±.25	"C"	TIN LEAD	30u"/.76u Au	.145/3.68	NONE
50642-1YYYFCLF	YYY	.145±.010/3.68±.25	"C"	TIN	30u"/.76u GXT	.145/3.68	NONE
50642-1YYYFD	YYY	.145±.010/3.68±.25	"D"	TIN LEAD	30u"/.76u Au	.145/3.68	2
50642-1YYYFDLF	YYY	.145±.010/3.68±.25	"D"	TIN	30u"/.76u GXT	.145/3.68	2
50642-1YYYFE	YYY	.145±.010/3.68±.25	"E"	TIN LEAD	30u"/.76u Au	N/A	2
50642-1YYYFELF	YYY	.145±.010/3.68±.25	"E"	TIN	30u"/.76u GXT	N/A	2
50642-XX004	240	.125±.010/3.18±.25	SEE SHEET 5	TIN LEAD	30u"/.76u Au	N/A	NONE
50642-XX004LF	240	.125±.010/3.18±.25	SEE SHEET 5	TIN	30u"/.76u GXT	N/A	NONE

Amphenol
FCi

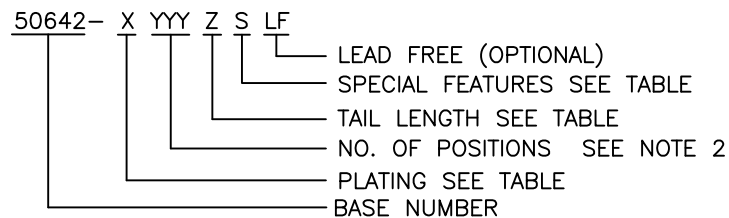
Copyright AFci

mat'l. code NOTE 3				surface ISO 1302 ✓		tolerance ISO 406 ISO 1101		projection 		product family HPC			
ltr	ecn no	dr	date	tolerances unless otherwise specified						title			
W				angles	linear	.XX±.01/.X±0.3		INCH/MM scale 1:1		4 ROW R/A RECEPTACLE PRESS FIT			
						.XXX±.005/.XX±0.13							
				0°±2°		.XXXX±.0020/.XXX±0.051							
				dr	D.INGRAM	7/13/05	Amphenol FCi		dwg no		sheet 6 of 7	size	
				enr	D.HORCHLER	7/13/05			50642		A3		
				chr	T.BREWBAKER	7/13/05			Product Customer Drawing				
				appd	D.HORCHLER	7/13/05							
sheet index	revision sheet												

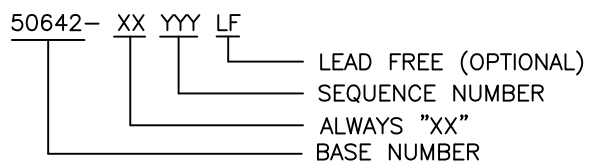
PRODUCT NUMBER
SEE TABLE

NOTES:

①. PRODUCT NUMBERING CODE



PRODUCT NUMBERING CODE FOR SELECT LOAD



- ②. THIS PRODUCT IS CONFIGURED IN SIZES OF 6 THRU 80 COLUMNS IN INCREMENTS OF ONE, i.e. 6, 7, 8, 9,79, 80.
- ③. MATERIAL: PRESS BLOCK – HIGH TEMP THERMOPLASTIC;
HOUSING–GLASS AND MINERAL FILLED HIGH TEMPERATURE THERMOPLASTIC, FLAME RETARDANT PER UL94V–O. COLOR–BLACK
CONTACT–BeCu
- ④. DRILLED HOLE DIA OF .0453±.001 INCH FINISHED TO .0400±.0030 INCH BY PLATING SnPb OR OTHER PLATING 0.0003 TO 0.0006 INCHES THICK WITH A COPPER UNDERPLATE AS NEEDED.
- ⑤. INFORMATION DOCUMENT: FOR PCB STAY– AWAY ZONE, SEE TA–0954.
- ⑥. SPECIAL FEATURES (SEE PRODUCT NUMBER TABLE, AND DETIALS ON SHEET 3)
- IF NO SPECIAL FEATURE CODE IS SELECTED, PCB MOUNTING HOLE DIMENSION TO BE $\phi.120\pm.003[3.05\pm0.07]$
 - "A" PCB MOUNTING HOLE DIMENSION TO BE $\phi.100\pm.003[2.54\pm0.07]$
 - "B" INCLUDES PRE–INSTALLED EYELETS FOR PCB ATTACHMENT IN A $\phi.100\pm.003[2.54\pm0.07]$ MOUNTING HOLE. (E TAIL ONLY)
 - "C" INCLUDES PRE–INSTALLED EYELETS FOR PCB ATTACHMENT IN A $\phi.120\pm.003[3.05\pm0.07]$ MOUNTING HOLE.
 - "D" INCLUDES PRE–INSTALLED EYELETS WITH MOLDED GUIDE PINS FOR PCB ATTACHMENT IN A $\phi.120\pm.003[3.05\pm0.07]$ MOUNTING HOLE.
 - "E" INCLUDES MOLDED GUIDE PINS WITH TRI–HOLE SHAPED MOUNTING HOLES. (EYELETS NOT INSTALLED)
- ⑦. LENGTH CALCULATIONS:
DIMENSION "A" CALCULATION = $.100 [2.54] \times \text{NO. OF COLUMNS} + .75 [19.1]$
DIMENSION "B" CALCULATION = $.100 [2.54] \times \text{NO. OF COLUMNS} + .450 [11.43]$
DIMENSION "C" CALCULATION = $.100 [2.54] \times \text{NO. OF COLUMNS} - .100 [2.54]$
- ⑧. MANUFACTURE'S LOGO, PN, AND LOT CODE TO APPEAR ON THIS SURFACE.
9. THIS PRODUCT (WITH "LF" SUFFIX) MEETS EUROPEAN UNION DIRECTIVES AND OTHER COUNTRY REGULATIONS AS DESCRIBED IN GS–22–008.
10. THIS HOUSING WILL WITHSTAND EXPOSURE TO 260°C PEAK TEMPERATURE FOR 10–30 SECONDS IN A CONVECTION, INFRA–RED OR VAPOR PHASE REFLOW OVEN.
11. ALL POSITIONS ARE LOADED EXCEPT FOR –XXYYY ASSEMBLIES WHICH HAVE SELECTIVE LOADING.

mat'l. code NOTE 3				surface ISO 1302 ✓		tolerance ISO 406 ISO 1101		projection 		product family HPC			
ltr	ecn no	dr	date	tolerances unless otherwise specified						title			
W				angles	linear	.XX±.01/.X±0.3		INCH/MM		4 ROW R/A RECEPTACLE PRESS FIT			
				0°±2°		.XXX±.005/.XX±0.13		scale 1:1					
				dr	D.INGRAM	7/13/05				dwg no		sheet 7 of 7	size
				enr	D.HORCHLER	7/13/05				50642		A3	
				chr	T.BREWBAKER	7/13/05							
				appd	D.HORCHLER	7/13/05							
sheet index		revision sheet											