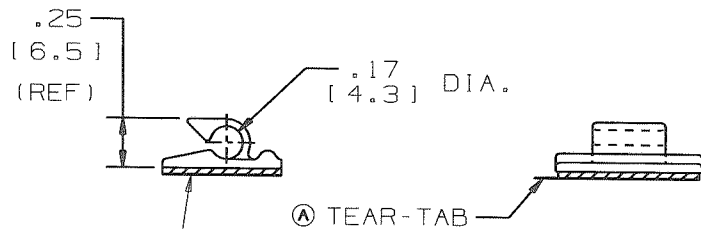
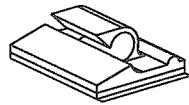
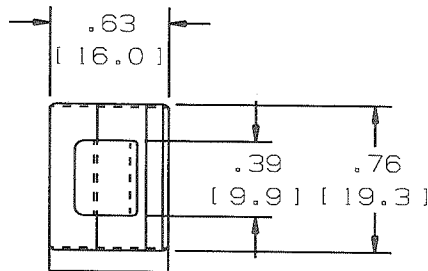


THIS COPY IS PROVIDED ON A RESTRICTED BASIS AND IS NOT TO BE USED IN ANY WAY DETRIMENTAL TO THE INTERESTS OF PANDUIT CORP.

NO WARRANTY, EXPRESSED OR IMPLIED, IS MADE BY PANDUIT WITH RESPECT TO ADHESIVE BOND PERFORMANCE. AMONG OTHER THINGS, THE CONDITIONS UNDER WHICH THESE MOUNTS MAY BE APPLIED, AND/OR THE SURFACE TO WHICH THEY MAY BE APPLIED, ARE BEYOND PANDUIT'S CONTROL.



ADHESIVE BACKING:  
 PRESSURE SENSITIVE FOAM TAPE, .04(1.0) THICK, WITH RUBBER (-A) ACRYLIC (-AT) OR HIGH BOND ACRYLIC (-AV) ADHESIVE AND PROTECTIVE LINER. LINER TO EXTEND BEYOND EDGE TO FORM TEAR-TAB. MOUNT IS DESIGNED TO SUPPORT .20 lbs. (91g) MAX. WEIGHT ON A CLEAN, DRY, SMOOTH SURFACE.

PANDUIT PART NUMBER*	MAXIMUM CABLE DIA. in. (mm)	WEIGHT lbs. (g)/100pcs
ACC19-A	.19 (4.8)	.17 (77)
ACC19-AT	.19 (4.8)	.17 (77)
ACC19-AV	.19 (4.8)	.17 (77)

- TO APPLY ADHESIVE CORD CLIP:
1. REMOVE PROTECTIVE LINER
  2. PLACE IN DESIRED LOCATION
  3. APPLY PRESSURE TO TOP OF CORD CLIP

NOTES:

- \* 1) SEE CURRENT PRICE SHEET FOR PART NUMBER SUFFIX DESIGNATION FOR PACKAGE SIZE AND PART COLOR.

(DIMENSIONS IN PARENTHESES ARE METRIC)

CAD FILENAME/LAYERS G03597BC\_DC\_GB0239GG/00B

**PANDUIT** CORP. TINLEY PARK, ILLINOIS

ADHESIVE CORD CLIP  
 ACC19-A , ACC19-AT , ACC19-AV

UNLESS OTHERWISE SPECIFIED,  
 DIMENSIONAL TOLERANCES ARE:  
 (.X) ± N/A (.XXX) ± N/A  
 (.XX) ± .02 (.5) ANGLES ± 5°

UNLESS OTHERWISE SPECIFIED,  
 ALL DIMENSIONS ARE GIVEN  
 IN INCHES, THIRD ANGLE PROJECTION.

DRAWN BY  
 CGSM

MAT'L:

SCALE  
 FULL

DATE  
 2-23-99

NYLON 6/6

DRAWING NO.

GB0239GG

DBG  
 A  
 SIZE

REV	DATE	BY	CHK	DESCRIPTION	ECN	R	CUST	SUP
00B	11-6-09	TMSA	SMY	ADDED PART NUMBER ACC19-AV REVISED TO TEAMCENTER NAMING CONVENTION	GB0239GG	00B	KEN	
2	6-5-03	MSAD		MODIFIED BASE LENGTH AND WIDTH DIMENSIONS	GB0239GG	2		
1	7-15-99	CGSM		REPLACED ISO VIEW	GB0239GG	1		
R	2-23-99	CGSM		RE-DRAWN FROM DWG SS-7173	GB0239GG	R		

CHK'D  
 KEN