

# Sens'it Generic



The Sens'it device is available if you want to build your own IoT solution with an off-the-shelf, certified, powerful device. This so-called **Sens'it Generic** offer is independently available for large quantities from our partner Altyor.



The device will be fully personalized to meet your needs:



Make Sens'it behave the way you need by creating your own **embedded software with Sens'it SDK.**

Customize the **front Lexan.** Make it suitable for your use case or highlight your own branding.



Bâtiment E-volution  
425, rue Jean Rostand  
31670 Labège – France  
sigfox.com



# Sens'it Discovery

Your IoT experience starts here



Visit us at Sigfox Booth #1701

[www.sensit.io](http://www.sensit.io)

For more information:  
[www.sensit.io](http://www.sensit.io)

**Contacts**  
[sensit@sigfox.com](mailto:sensit@sigfox.com)

Visit us at Sigfox Booth #1701

# Sens'it Discovery

**Sens'it Discovery** is an IoT end-to-end solution provided by Sigfox. It combines the Sens'it device connected to Sigfox network with an application.



Sens'it Discovery has 5 different modes:



Sens'it Discovery includes:

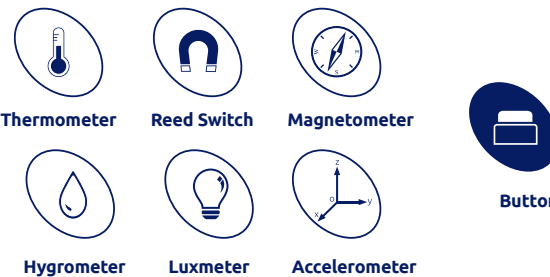
- 1 Sens'it device and accessories
- 1 year application access & Sigfox connectivity
- 50 SMS

App available on [www.sensit.io](http://www.sensit.io) and soon:



## A multi-sensor device

Sens'it is a **multi-sensor** Sigfox Ready certified device. It can suit many IoT applications, it is up to your imagination !

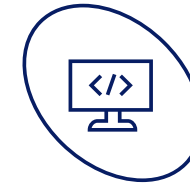


**Rechargeable** • **Reprogrammable** • **Water resistant (IP54)**

Certifications:

- Sigfox Ready (all radio configurations: RC1, RC2, RC3, RC4)
- CE - FCC - ARIB - Australia - Singapore

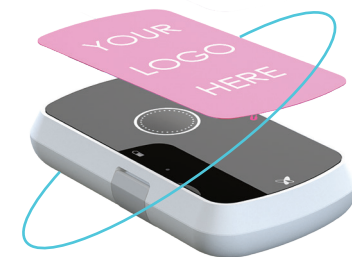
## A SDK for developers



Developers can turn their Sens'it into a devkit and customize its behavior using the Sens'it Software Development Kit (SDK).

- Get direct access to your data on the Sigfox Cloud
- Change Radio Configuration or message periodicity
- Use multiple sensors at the same time
- Build custom apps

## A customizable device cover



Sens'it front lexan is customizable. Just add your branding to make the solution your own.

**Designed** in France - **Assembled** in China