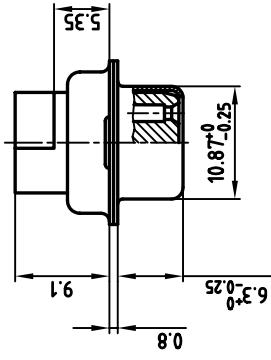
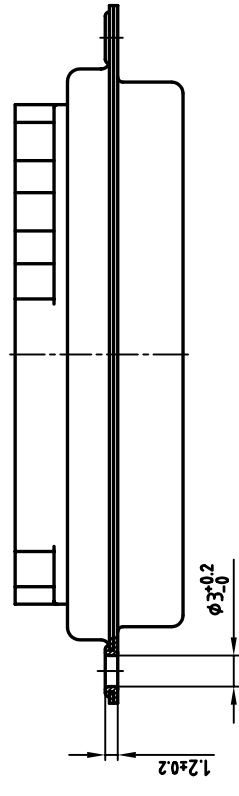
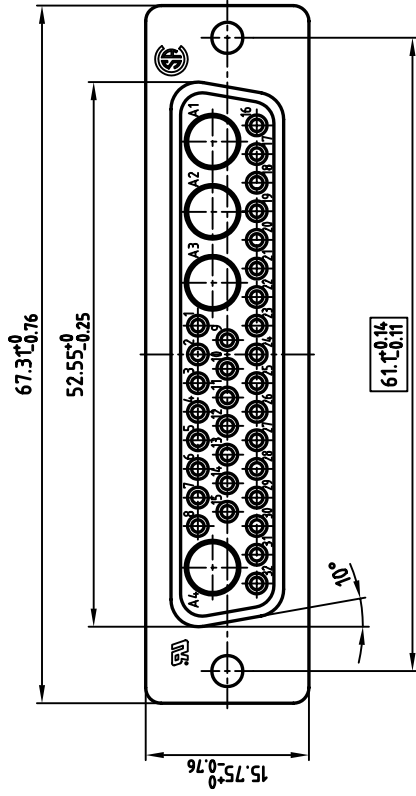
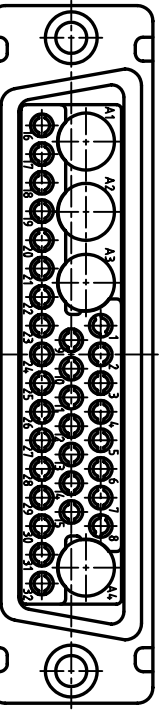


used for: D-SUB COMBINATION CRIMP



NOTES:

1. METAL SHELLS: STEEL; min. 320µ" TIN
2. INSULATORS: PBT GF UL 94 V-0, BLACK
3. = CRITICAL DIMENSION: SPC



THIS DRAWING MAY NOT BE COPIED OR REPRODUCED IN ANY WAY, AND MAY NOT BE PASSED ON TO A THIRD PARTY WITHOUT WRITTEN PERMISSION.
OWNERSHIP AND COPYRIGHT OF CONEC GMBH DO NOT ALTER CAD DRAWING BY HAND

rev.	description	date	name

tolerance	date	name
2001	07.05.	Pareil
drawn	08.05.	E. Mickenbecker
appd.	norm	
	e-old	

scale:	2:1
material:	SEE NOTES
title:	D-SUB COMBINATION FEMALE 36W4S CRIMP STYLE
dwg no:	AutoCAD 2000 DIN-A 13K1A239A
part no:	3036W4SXX99A10X
sh: 1/1	3

