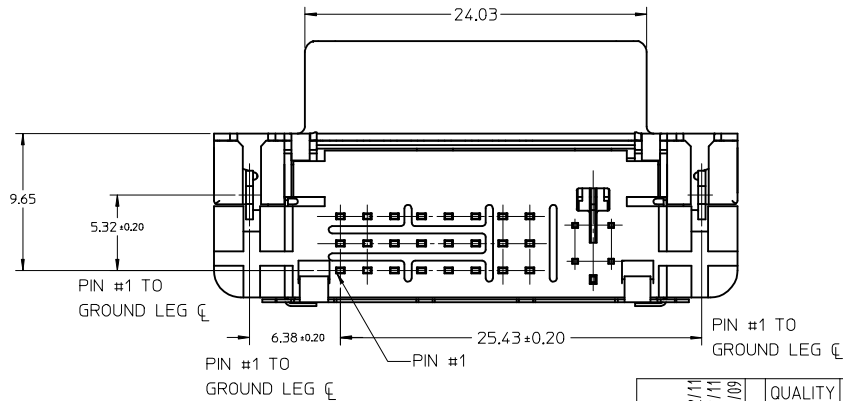
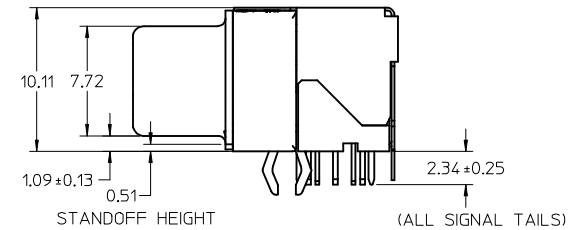
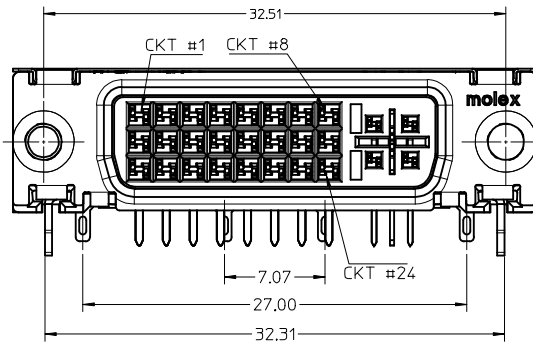
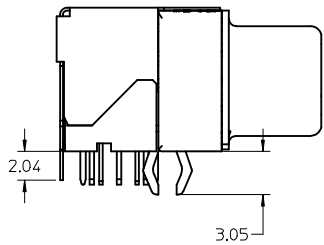
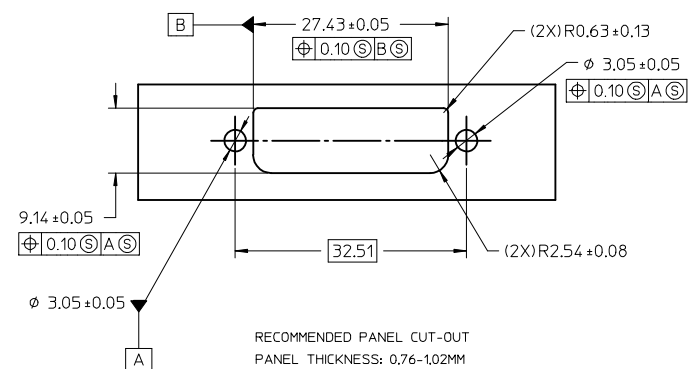
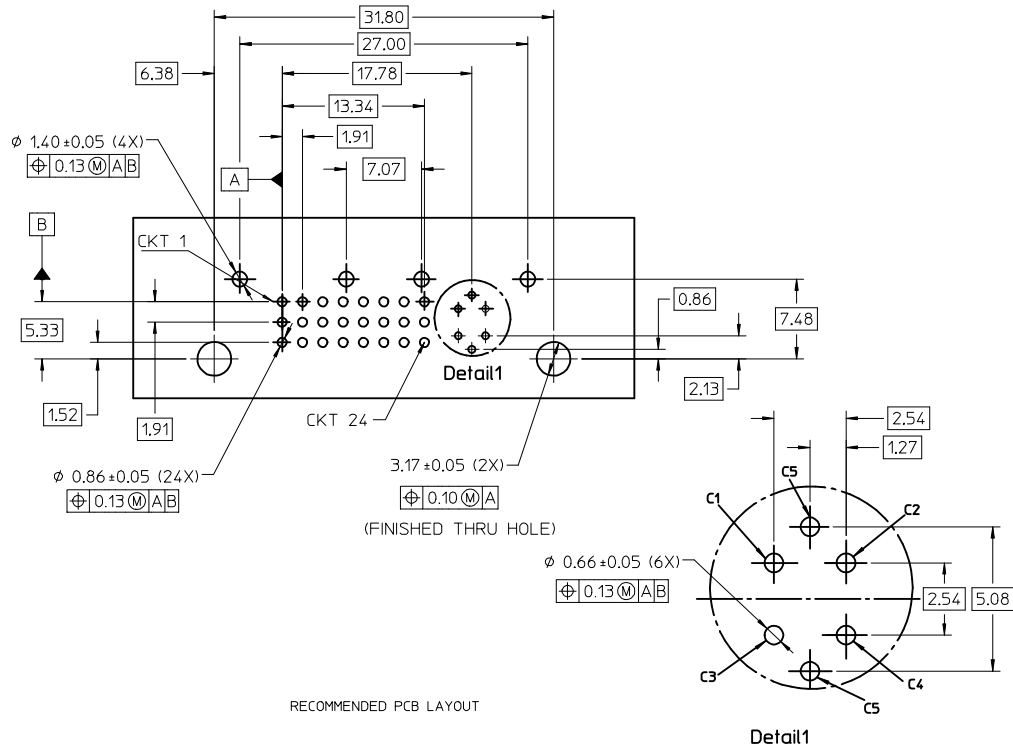


NOTES:

1. MATERIAL:
FRONT SHIELD: DEEP DRAW STEEL,
BACK SHIELD: STAINLESS STEEL,
HOUSING: LCP, UL94V-0, NATURAL (WHITE),
TAIL ALIGNER: LCP, UL94V-0, NATURAL (WHITE),
CONTACT: COPPER ALLOY.
2. PLATING: SEE SHEET 2.
3. PRODUCT CONFORMS TO MOLEX PRODUCT SPECIFICATION NUMBER PS-74320-001.
4. SEE SHEET 2 FOR RECOMMENDED PANEL CUT-OUT AND P.C.B. LAYOUT.
5. PARTS WILL BE PACKAGED IN TRAYS PER PK-74320-044.
6. PRODUCT CONFORMS TO DDWG DVI SPECIFICATION. REFER TO THIS SPECIFICATION FOR CONNECTOR MATING DIMENSIONS.
7. RECOMMENDED MOUNTING HARDWARE IS MOLEX P/N 88780-6066. REFER TO PRODUCT SPECIFICATION NUMBER PS-74320-001 FOR THIS APPLICATION TORQUE REQUIREMENT FOR ASSMBLING MOUNTING HARDWARE.



REVISED EC NO: SH2015-0200 DRAWN: XQZHANG 2014/12/11 CHKD: XQZHANG 2014/12/11 APPR: AYIN 2015/02/09	QUALITY SYMBOLS ▽=0 ▽=0 ▽=0	GENERAL TOLERANCES (UNLESS SPECIFIED)		DIMENSION STYLE MM ONLY		SCALE 1:1	DESIGN UNITS METRIC	THIRD ANGLE PROJECTION	
			m/m	INCH	DRAWN BY LBAO	DATE 2005/06/17	TITLE DVI-I RIGHT ANGLE RECEPTACLE CONNECTOR W/SHIELDING & W/O SCREW molex DOCUMENT NO. SD-74320-133 SHEET NO. 1 OF 2		
		4 PLACES	±---	±---	CHECKED BY LBAO	DATE 2005/06/17			
		3 PLACES	±---	±---	APPROVED BY				
2 PLACES	±0.25	±---							
			1 PLACE	±0.25	±---				
			0 PLACE	±---	±---				
			ANGULAR ±0.5°		MATERIAL NO. 74320-1033				
			DRAFT WHERE APPLICABLE MUST REMAIN WITHIN DIMENSIONS		THIS DRAWING CONTAINS INFORMATION THAT IS PROPRIETARY TO MOLEX INCORPORATED AND SHOULD NOT BE USED WITHOUT WRITTEN PERMISSION				



RECOMMENDED PANEL CUT-OUT
 PANEL THICKNESS: 0.76-1.02MM

PLATING OPTIONS:
 FRONT SHIELD -- 150u"/3.75um MIN. BRIGHT TIN OVER
 50u"/1.27um MIN. NICKEL OVER COPPER FLASH.
 BACK SHIELD -- 50u"/1.27um MIN. BRIGHT TIN OVER
 50u"/1.27um MIN. NICKEL OVER COPPER FLASH.

.075"/1.91mm CONTACTS -- 30u"/0.75um MIN. SELECT GOLD AND
 100u"/2.50um MIN. SELECT TIN
 OVER 50u"/1.27um MIN. NICKEL OVERALL.

.100"/2.54mm CONTACTS -- 30u"/0.75um MIN. SELECT GOLD AND
 100u"/2.50um MIN. SELECT TIN.
 OVER 50u"/1.27um MIN. NICKEL OVERALL.

SEE SHEET 1 EC NO: SH2015-0200 DRAWN: XZHZHANG 2014/12/11 CHKD: XZHZHANG 2014/12/11 APPR: AYIN 2015/02/09 REV B	QUALITY SYMBOLS ▽=0 ▽=0 ▽=0	GENERAL TOLERANCES (UNLESS SPECIFIED) <table border="1"> <thead> <tr> <th></th> <th>mm</th> <th>INCH</th> </tr> </thead> <tbody> <tr> <td>4 PLACES</td> <td>± ---</td> <td>± ---</td> </tr> <tr> <td>3 PLACES</td> <td>± ---</td> <td>± ---</td> </tr> <tr> <td>2 PLACES</td> <td>± 0.25</td> <td>± ---</td> </tr> <tr> <td>1 PLACE</td> <td>± 0.25</td> <td>± ---</td> </tr> <tr> <td>0 PLACE</td> <td>± ---</td> <td>± ---</td> </tr> </tbody> </table>		mm	INCH	4 PLACES	± ---	± ---	3 PLACES	± ---	± ---	2 PLACES	± 0.25	± ---	1 PLACE	± 0.25	± ---	0 PLACE	± ---	± ---	DIMENSION STYLE MM ONLY	SCALE 1:1	DESIGN UNITS METRIC	THIRD ANGLE PROJECTION
		mm	INCH																					
	4 PLACES	± ---	± ---																					
	3 PLACES	± ---	± ---																					
2 PLACES	± 0.25	± ---																						
1 PLACE	± 0.25	± ---																						
0 PLACE	± ---	± ---																						
DESCRIPTION DVI-I RIGHT ANGLE RECEPTACLE CONNECTOR W/SHIELDING & W/O SCREW	DRAWN BY LBAO	DATE 2005/06/17	TITLE DVI-I RIGHT ANGLE RECEPTACLE CONNECTOR W/SHIELDING & W/O SCREW	CHECKED BY LBAO	DATE 2005/06/17	APPROVED BY DATE																		
MATERIAL NO. SEE SHEET 1	DOCUMENT NO. SD-74320-133	SHEET NO. 2 OF 2	molex																					
DRAFT WHERE APPLICABLE MUST REMAIN WITHIN DIMENSIONS	SIZE A2	THIS DRAWING CONTAINS INFORMATION THAT IS PROPRIETARY TO MOLEX INCORPORATED AND SHOULD NOT BE USED WITHOUT WRITTEN PERMISSION																						